

Locally developed and delivered livestock innovations improving cattle productivity in Son La province

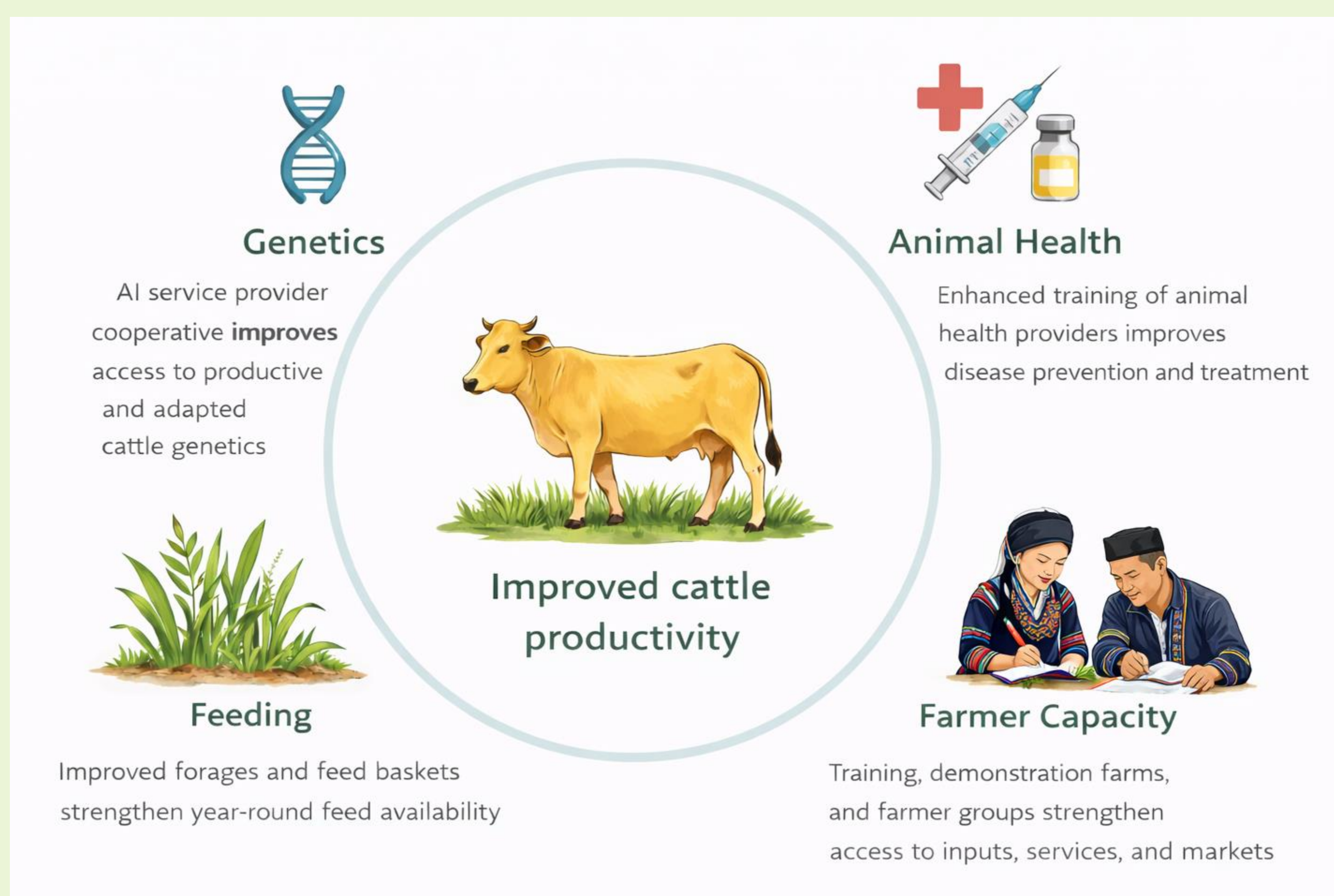
Karen Marshall¹, Fred Unger¹, Mary Atieno², Le Thi Thanh Huyen³, Tran Thi Bich Ngoc³, Nguyen Quang Huy³, Dao Thi Thu Hang², Nguyen Thi Thinh¹, Lo Quang Thanh¹, Nguyen Thi Minh Phuong¹ and Chi Nguyen¹
¹International Livestock Research Institute, ²Alliance of Bioversity International and CIAT, ³Vietnam Institute of Animal and Veterinary Sciences

Problem statement

Over 300,000 cattle sustain 180,000 households in Son La—yet limited access to genetics, feed, and animal health services holds productivity and profits back.

The solution

Through the Chăn-hênh initiative, productivity enhancing innovations were co-developed and piloted with women and men cattle keepers, farmer groups, service providers, and other local partners.



A farmer prepares fermented feed using improved practices promoted by the Chan-Henh initiative in Son La (Photo: Luong Van Dung).

Scalability and regional relevance

The next stage of the Chăn-hênh initiative will scale productivity-enhancing innovations to additional communes in Son La while further strengthening the cattle value chain.

Scaling will be driven by local partners, critically including the commune-level Agricultural Service Centers.

Partners and donors involved

Chan-Henh is co-implemented by the International Livestock Research Institute (ILRI), the Alliance of Bioversity International and CIAT (ABC), the Vietnam Institute of Animal and Veterinary Sciences (VIAVS), the Vietnam Women's Academy (VWA), and agricultural authorities in Son La Province, in close collaboration with local actors, including women and men livestock keepers.

This work is supported by the Aquatic Foods (SAAF) Science Program, and previously the CGIAR Sustainable Animal Productivity initiative. CGIAR research is supported by contributions to the [CGIAR Trust Fund](#)

Key results and impacts

- **Improved cattle productivity** through combined innovations in genetics, feeding, and animal health
- **Strengthened access to livestock services** through trained local service providers and farmer groups
- **Hundreds of smallholder households reached** with livestock productivity innovations
- **Increased capacity of local partners** to deliver livestock advisory services and support partners
- **Evidence generated to inform livestock development and scaling** in Son La Province

