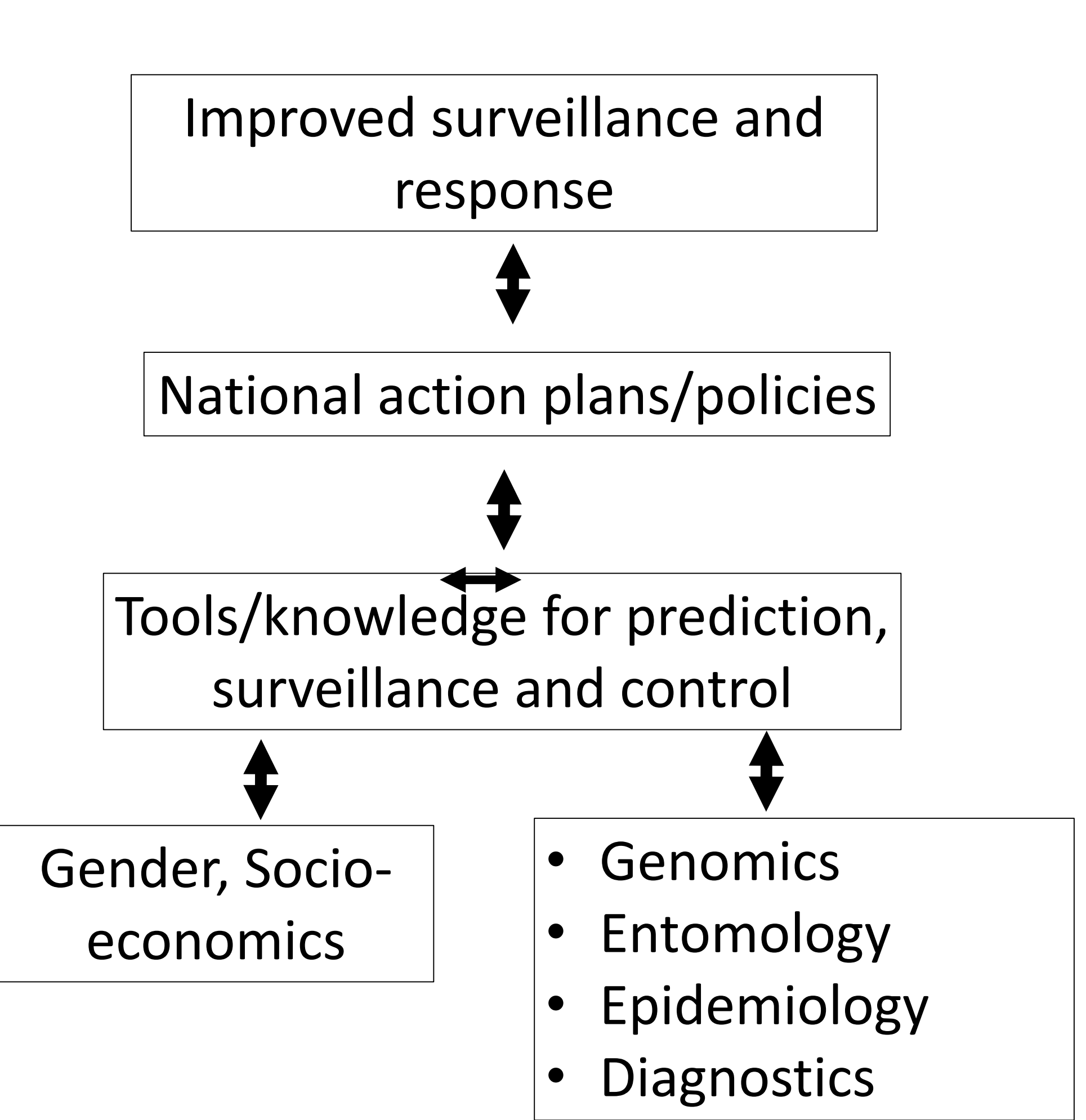


Context

The frequency of RVF outbreaks in the country is expected to rise with climate and land use change. The project aims to generate knowledge and tools that can support better surveillance and control of the disease.

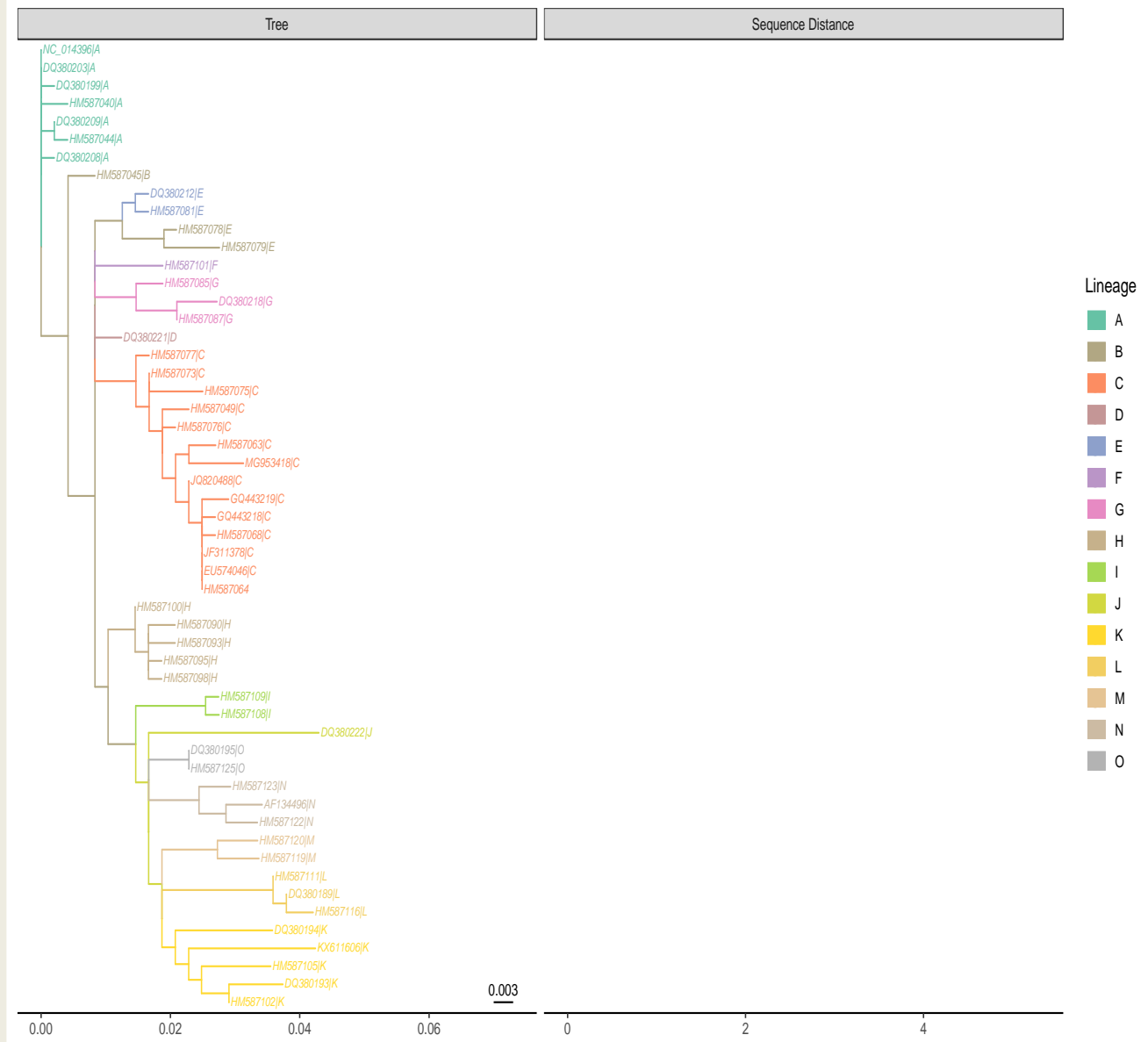


Participatory Disease Surveillance

- 45 personnel from 36 districts have trained in PDS
- 3 districts (Budaka, Butebo and Kiruhura) developed RVF case studies
- KAP tool for use in PDS of RVF has been developed

Boosting Uganda’s Investment in Livestock Development - RVF component

Dan Tumusiime, Bernard Bett, Martin Barasa, Joshua Waiswa, Claire Akwongo, Marsy Asindu, Patrick Abila, John Juma, Limbaso Konongoi, Sam Oyola, Martin Groschup, Franziska Stoek, Cornelia Silaghi, Amira Al-Hosary, Ard Nijhof, Emily Ouma, Jane Namatovu, Innocent Obilil, Denis Mugizi, Kristina Roesel, Rosemary Sang



Genomics

- KEMRI commenced culturing and sequencing RVF from previous outbreaks in Kenya (1997/98; 2006/2007; 2018) and investigation of suspected outbreaks in Kenya.
- Developed a user-friendly open-source tool for classifying and assigning lineages of Rift Valley fever virus consensus genomes/sequences with high specificity, sensitivity and accuracy.
- Permits to allow culturing work of RVF at ILRI have been received



Outbreak investigations

- Joint investigation by MAAIF and MoH in May 2021 following the death of a patient from Kiruhura district, confirmed as RVF
- Some animal samples RVF IgM+ / IgG+ (included in those to be shipped to KEMRI (and FLI))
- The model of joint outbreak investigations is proposed in the event of abortions in animals or suspect cases (malaria-like symptoms but neg malaria test)
- Engaged with the National One Health Platform
- Similar activities in Kenya: outbreak investigations in Jan, Feb, Jun and Jul

RVF gender and socio-economics work

- Gender: brief and blog on gender and livestock vaccination (Jane, Emily, Zoe)
- Socio-economics: progress on the development of a stochastic model for capturing impacts (Marsy)
- RVF gender and socio-economics qualitative surveys conducted to assess potential barriers to uptake of RVF control options



Head way in addressing challenges

Delays on formalization of One Health partnerships are being solved with formal engagement of different patterners and stakeholder meetings

Future steps – Year 3

- KAP survey
- Procurement of consumables for fields activities
- Cross sectional & longitudinal sero-surveys
- Implementation of PDS case studies
- Culturing, isolation, sequencing of RVF virus from outbreak samples
- RVF vector competence studies

RVF ENTOMOLOGY WORK

- insectary completed
- SOPs developed
- Traps procured
- Vector competence studies at FLI



Contact

Bernard Bett
b.bett@cgiar.org